

# H4 SERIES

## HMK 230 LC



**HIDROMEK**









# New H4 Series

## Innovation coming from experience

Being produced with developed hydraulic system design, Hidromek's new H4 Series excavators offer an outstanding performance by working faster, more productively and more efficiently. H4 Series excavators produce more work with less fuel; hence, they are more profitable for their users than ever.

# H4

## SERIES



Performance.....	6-7
Durability.....	8-11
Safety.....	12-13
Technology.....	14-15
Comfort.....	16-17
HIDROMEK Smartlink - Ease of Service.....	18-19
Technical Features .....	20-25

The information and images, and equipment presented in this brochure are either standard or optional depending on the configuration. HIDROMEK has the right to modify the specifications and the designs of the model indicated in this brochure without prior notice.







# More work within less time

## 17 % More productive\*

Shortening the work cycle time with bigger bucket capacity and speed, H4 Series carry the productivity to the top level with their new technology.

## 21% More efficient\*

With improvements to the attachment and hydraulic group, H4 Series excavators ensure more work within less time.

## 7% Faster\*

With faster hydraulic movements due to developed hydraulic system design, H4 Series excavators ensure more work within less time.

\* The data are prepared in comparison with the previous serie in HP mode.











# More durable

Produced to have reinforced heavy duty construction considering maximum performance, long life and smooth operation in severe field conditions, HİDROMEK excavators ensure more durability with the improvements made in the new H4 Series.









①  
More durable anti-wearing plates  
(Hardox 450 HB)



②  
Optimized bucket form



③  
Reinforced arm supporting parts



④  
Reinforced casting tip



⑤  
Heavy duty arm



⑥  
Reinforced boom structure



⑦  
Reinforced boom cylinder cast  
bearing



⑧  
Reinforced lowerframe and  
undercarriage components

## Reinforced heavy duty construction

With their reinforced heavy duty construction produced at HÍDROMEK's modern production facilities and going through sensitive quality-control processes, H4 Series excavators have excellent durability.

## Bronze-Graphite Bushings



Bronze-graphite bushings used in boom-arm and boom-frame connection points increase the lubrication period, and greatly prevent the wear of the pins because of graphite, having a very high grease absorption and retention capability, embedded in the inner structure of the bushings.

⑤

④

①







# Safeworkingenvironment

## ROPS&FOPS cabin

Having the standards of ROPS (Roll Over Protective Structure) & FOPS (Falling Object Protective Structure), H4 Series excavators provide maximum safety and durability.

## Wide vision capacity

Designed with giving special importance to occupational safety, H4 Series ensure excellent vision by minimizing the blind spot on the side and rear cameras. Along with the increase in the number of led headlights, the night vision is significantly improved on H4 Series excavators; in addition, there are also red handles and warning labels providing maximum safety for the operator.

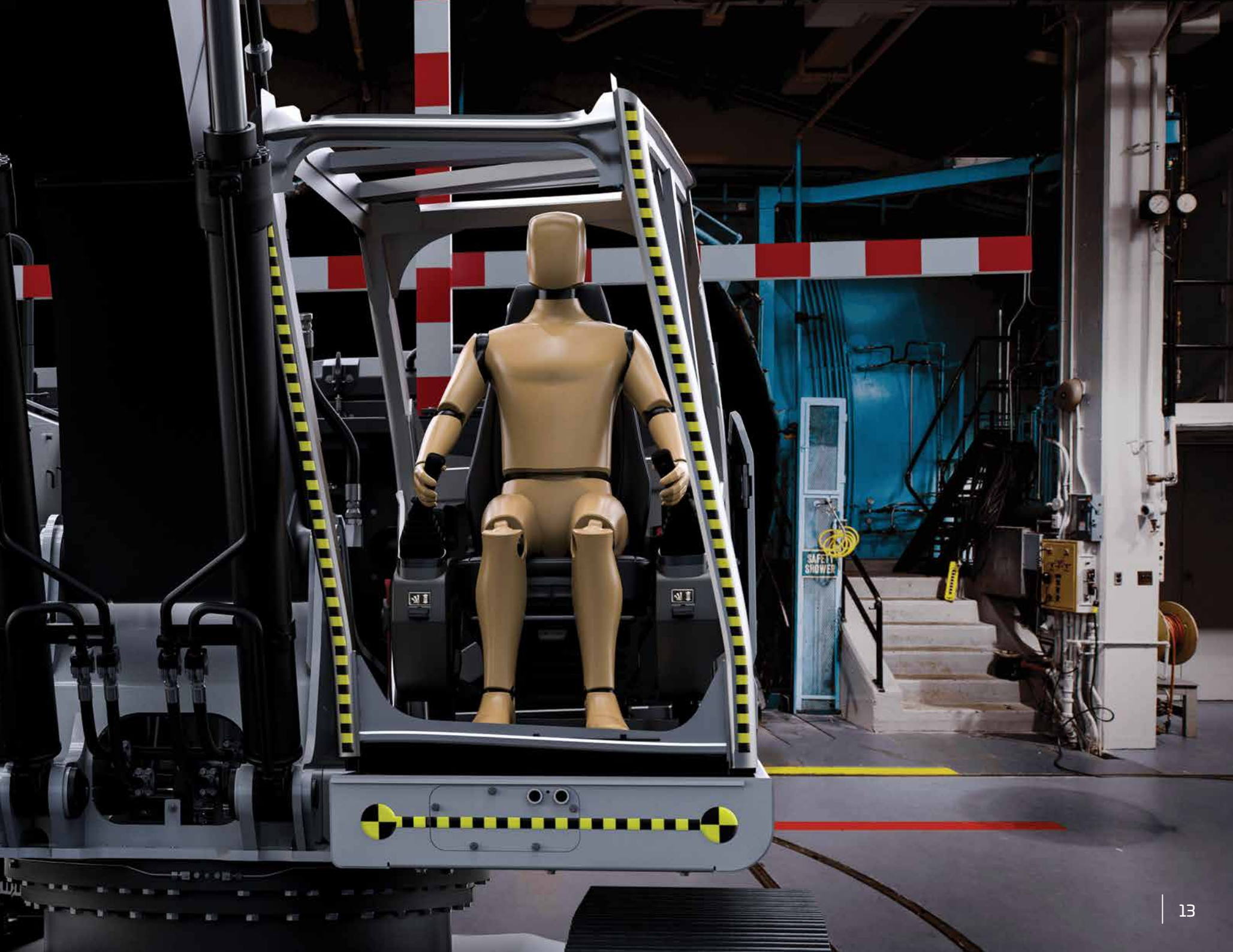
## Audio warning systems

H4 Series excavators enable safer working environment with their automatic starting horn, swing warning system and travel warning system.

## Flame holder system

Where sparks are dangerous, regeneration inhibit feature is activated from the cabin, so flame from the exhaust is prevented temporarily.







# Shaped with technology

Electronic system of H4 Series excavators designed to protect the engine and hydraulic components to provide fuel saving and superior performance.

## Automatic stop system

In the new series, automatic stop system through configurable idling and stopping times provides fuel saving by stopping the engine after the machine is on idle. Automatic stop system in H4 Series helps to decrease the operational costs to minimum, and contributes to saving the environment.

## Safe fuel transfer pump

“Safe fuel transfer pump” added to H4 Series stops the pump automatically when the tank is full and this feature gets activated also when the pump does not transfer fuel for 30 seconds, and ensures that the pump stops automatically.

## Power boost technology

In H4 Series, power boost technology gets activated automatically in the conditions when the machine needs extra power, and ensures that the machine has the proper performance for the work.

## 8" Touch control panel

8 inch touch control panel is positioned ergonomically at a point that the operator can easily reach it. Touch control panel having high quality hardware and a large screen easily enables to control the machine features and access to machine information.

The features of touch control panel:

- It offers multi-language option
- Music system is integrated into 8" touch control panel.
- It allows the operator to adjust the flow required for the attachment without leaving the cab and save this information for 20 different attachments.
- Selection of double or single acting line can also be done over the user panel.
- During travel, rear and side view cameras with improved image quality and activated automatically can be controlled.
- Information on the average and instant fuel consumption can be obtained.
- Information on status such as atmospheric pressure, turbo boost pressure, fuel pressure and hydraulic pump pressure can be obtained.
- User can acquire working hour information such as work, attachment and travel.
- Maintenance registries can be obtained, and the user is warned when the maintenance time approaches.
- Failure codes and registries can be obtained.
- Audio warning systems can be controlled.



# OPERA, the guide of the field

H4 Series excavators are equipped with Opera (HIDROMEK Operator Interface) for the operator to use the machine easily, and feel comfortable and relaxed as he is in an office environment.

## Functions to be controlled by means of Opera

- Engine RPM control
- Access to control panel menu
- Functions of lights, windshield wipers and rear view camera
- Music system control
- Auto stop control of the engine to ensure maximum fuel economy during low idle
- On H4 Series machines, the preheating system available to protect the engine and hydraulic systems can be controlled via Opera.



# The aesthetic design of power

The seat ergonomic, air suspended and having 35 degrees adjustable backrest angle is provided in H4 Series, and it enables the operator to work comfortably and without getting tired for long working hours.

H4 Series which has many features\* such as proportional control pedals and joysticks, throttle control dial, operator touch screen, interior light, cup holder and heating-cooling box give more importance to user comfort.

HIDROMEK

\* Other features for user comfort on H4 Series machines can be found on page 21.

# Office comfort in construction equipment

## Automatic air conditioning system

Air vents and air conditioning system which can automatically adjust itself according to the ambient heat located in the redesigned cabin provide the best cooling performance in its class by 30%.

## Wide angle view

On the new series machines, the new two-piece windshield wiper system designed for creating more comfortable work environment provides a wide angle view which increases the work efficiency of the user.

## Led headlights for night vision

Led headlights on new H4 Series machines improve the night vision, and enable the operator to work more safely and comfortably.

## Dampers

By using 6 silicone dampers on H4 Series excavators, noise, shock and vibration are absorbed and prevented from being transmitted to the cabin under any working condition.





# You have the control with HİDROMEK **SmartLink**

Telematic system HİDROMEK Smartlink allows the user to easily access to machine location and technical information via computer and mobile phone.

## **Follow the work time and location of your machine through HİDROMEK Smartlink!**

Through GPS tracking system, it is possible to track the location and the work time intervals of the machine.

## **Analyze your fuel consumption through HİDROMEK Smartlink!**

It is possible to analyze fuel consumption according to the working conditions of the machine and daily fuel parameters.

## **Check the works for which your machine has been used through HİDROMEK Smartlink!**

Through working mode information, it is possible to see the daily and total working hours of the machine for excavation and leveling and with crusher or with other optional attachments besides the power mode information and the speed ranges.

## **Follow your machine's maintenance through HİDROMEK Smartlink!**

Under the Alerts list, the machine's upcoming maintenance can be checked while the information of the nearest authorized service can be obtained, and it can be contacted.

## **Contact the nearest authorized service or regional service through HİDROMEK Smartlink!**

With the application, it is possible to obtain the information on Regional and Authorized Services of HİDROMEK After Sales Services as well as the directions to them.

## **Have performance reports for the selected periods of time for your machines through HİDROMEK Smartlink!**

For any selected periods of time, it is possible to have a report on daily fuel consumption, average fuel consumption, power and working modes, daily work time intervals and locations.



To download Smartlink application





## Easy maintenance and fast service for H4 Series through safe and easy access

H4 Series excavators, designed considering fast access to hydraulic and engine equipment, provide easy maintenance and service. Most of the maintenance can be easily carried out without getting on the machine, which shortens the service time and increases machine work time.

Automatic greasing system ensures that all parts of the machine can be lubricated from one single center.





ENGINE				
Brand & Model		ISUZU-4HK1X		
Type		Water cooled, 4 cycles, 4 cylinders, inline, diesel engine with direct injection, turbocharger and intercooler		
Power	Gross	172 HP (128 kW) @2000 rpm / SAE J1995		
Maximum Torque	Gross	670 Nm (495 lbft) @1600 rpm		
Displacement		5193 cc (317 cubic inches)		
Bore x Stroke		115 mm x 125 mm (4.53" x 4.92")		
Emission Class		TIER IV (EPA)		
HYDRAULIC SYSTEM				
MAIN PUMP				
Type	2 axial piston pumps with variable displacement and swashplate			
Max. Flow Rate	2 x 221 L/min (2x54 gal/min)			
Pilot Pump	Gear type 20 L/min (5.3 gal/min)			
WORKING PRESSURE				
Attachment	350 kgf/cm² (4978 psi)			
Power Boost	370 kgf/cm² (5263 psi)			
Travel	350 kgf/cm² (4978 psi)			
Swing	306 kgf/cm² (4352 psi)			
Pilot	40 kgf/cm² (570 psi)			
HYDRAULIC CYLINDERS				
Boom	2x ø120x ø85x1300 mm ( 2 x 4.72" x 3.35" x 51.18")			
Arm	1x ø135x ø95x1520 mm (5.31" x 3.74" x 59.84")			
Bucket	1x ø120x ø85x1060 mm (4.72" x 3.35" x 41.73")			
SWING SYSTEM				
Swing motor	Fixed swashplate piston motor integrated with super shock absorber valve			
Reduction	2 stage, planetary gear type			
Swing Brake	Hydraulic disc type, pilot operated and automatically released			
Swing Speed	119 rpm			
LOWER FRAME				
Construction		"X" type lower frame with pentagon shaped box type side frames		
Shoe		Triple grouser		
No. of Shoes		2 x 49 pieces		
No. of Lower Rollers		2 x 9 pieces		
No. of Upper Rollers		2 x 2 pieces		
Track Tensioner		Hydraulic type with spring cushioning		
ELECTRICAL SYSTEM				
Voltage		24 V		
Battery		2 x 12 V / 100 Ah		
Alternator		24 V / 50 A		
Starter Motor		24 V / 5 kW		
TRAVEL AND BRAKES				
Travel		Fully hydrostatic		
Travel Motor		Axial piston motor with 2 speed stages and swashplate		
Reduction		2 stage, planetary gear type		
Travel Speed	High Speed	5,8 km/h (3.6 mph)		
	Low Speed	3,8 km/h (2.4 mph)		
Max. Traction		18.310 kgf (40,367 lbf)		
Gradeability		35° (%70)		
Parking Brake		Hydraulic disc type, pilot operated and automatically released		
Ground Pressure (With 600 mm - 24" Shoe)		0,50 kgf/cm² (7 psi)		
FILLING CAPACITIES				
Fuel Tank		405 L (107 GAL)	Engine Cooling System	33 L (8.7 GAL)
Hydraulic Tank		152 L (40 GAL)	Engine Oil	19,3 L (5.1 GAL)
Hydraulic System		285 L (75 GAL)	Urea	35 L (9 GAL)
OPERATING WEIGHT (kg - lbs)				
	Mono Boom	Two Pieces Boom	LR	
HMK 230 LC	23.600 (52,014 lbs)	24.200 (53,337 lbs)	25.600 (56,422 lbs)	
HMK 230 NLC	23.700 (52,235 lbs)	24.400 (53,778 lbs)	-	

## EQUIPMENT

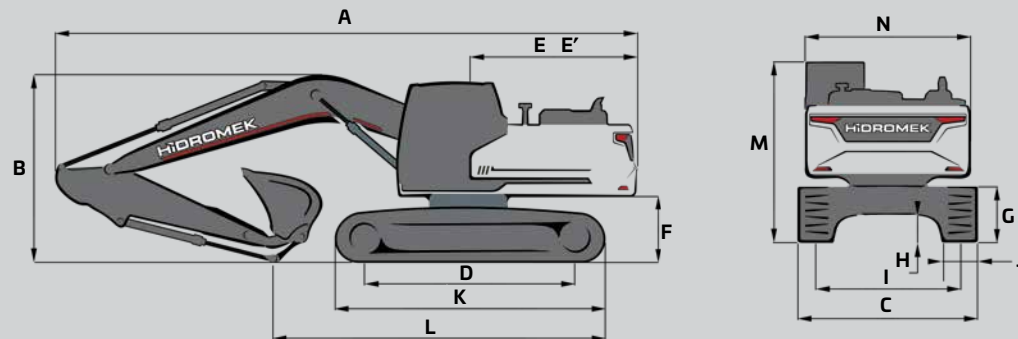
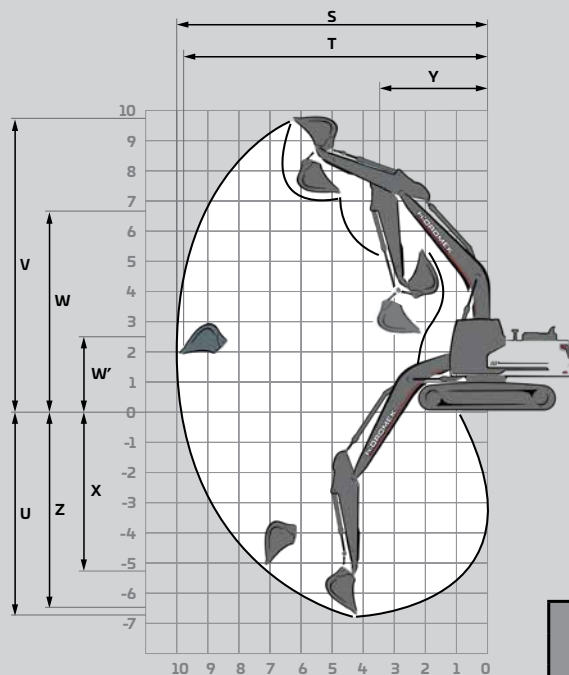
## HMK 230 LC

Engine	Standard	Optional
Water cooled diesel engine with turbocharger and intercooler	●	
Engine pre-heat function	●	
Automatic idling	●	
One touch auto-idle system	●	
Automatic stop function	●	
Two-stage air filter	●	
Air filter clogged indicator	●	
Low engine pressure warning system	●	
Overheat warning system	●	
Adjustable power modes	●	
High altitude working function	●	
Electronical engine control	●	
Hydraulic System	Standard	Optional
Boom and arm regeneration valve	●	
Automatic power boost	●	
Smooth boom feature		0
Main hydraulic filter	●	
Backup ports (valve)	●	
Cylinder cushioning and contamination seals	●	
Single-acting hydraulic line, breaker		0
Double-acting hydraulic line, crusher		0
Additional line		0
Quick coupling line		0
Attachment settings through instrument panel		0
OPERATOR'S CAB	Standard	Optional
Pressurized and sound isolated cabin	●	
Air-conditioning	●	
Air-suspension seat	●	
Heated seat		0
Operator touch screen	●	
Opera control system	●	
Throttle control dial	●	
Automatic travel speed (low / high)	●	
4 different working modes	●	
Sliding windscreen and removable lower windscreen	●	
Openable left door window	●	
Upper and lower windshield wiper	●	
Joysticks and pedals	●	
Travel pedals and control levers	●	
Proportional controlled pedals and joysticks		0
Electric horn	●	
Intrior light	●	
Cup-holder	●	
Convenient storage	●	
Convenient storage (for equipment)	●	
Heating & Cooling box	●	
Easy-cleaned floor	●	
12V power socket	●	
Computer connection port	●	
Radio / mp3 / usb / Aux	●	
Detachable Movement Levers		0

Lower Frame	Standard	Optional
Narrow Lower Chassis		0
Track width options 700 mm/800 mm/900 mm (28"/32"/36")		0
Lubricated and sealed track components	●	
Dozer blade		0
Mooring points for shipment	●	
Safety	Standard	Optional
ROPS (Roll Over Protective Structure)	●	
FOPS (Falling Object Protective Structure)	●	
Rear view camera	●	
Side view camera		0
Right and left rear view mirrors	●	
Working lamps	●	
LED working lamps		0
Rotating beacon		0
Swing and travel alarm		0
Emergency engine stop switch	●	
Pilot operated and automatically released swing brake	●	
Boom and arm cylinder safety valve		0
Overload warning system		0
Battery cut-off switch	●	
Handrails by the steps and on the upper frame	●	
Perforated metal non-slip plates	●	
Safety locking device	●	
Safety glass	●	
Emergency hammer	●	
Lockable fuel tank cover	●	
Upper and lower guards for windshield		0
Operator's cab ceiling guard		0
Fuel Safety System		0
Miscellaneous	Standard	Optional
Telematic system (HIDROMEK Smartlink)		0
GEO System		0
Fuel transfer pump with automatic stop	●	
Water sensor on fuel pre-filter	●	
Bio oil B7	●	
Alternator - Battery	●	
Battery Charge Indicator	●	
Automatic lubrication system		0
Working lamp guards		0
Hydraulic breaker return line filter		0
Double pump combination function		0
Choosing single or double acting attachment on the instrument panel		0
Choosing the control method for the optional attachment		0
Boom cylinder piping guard		0
Bucket cylinder rod guard		0
Warning horn	●	
Counterweights		0

● STANDARD 0 OPTIONAL





## DIMENSIONS

		LC				NLC		
		Mono Boom		Two Pieces Boom	LR	Mono Boom		Two Pieces Boom
BOOM (m / feet/inches)		5,70 (18.70')		5,60 (18.37')	8,50 (27.89')	5,70 (18.70')		5,60 (18.37')
ARM (m / feet/inches)		*2,92 (9.58')	2,40 (7.87')	*2,92 (9.58')	6,10 (20.01')	2,40 (7.87')	*2,92 (9.58')	*2,92 (9.58')
GENERAL DIMENSIONS (mm - inches")	A) Overall Length	9.740 (383.5")	9.680 (381.1")	9.590 (377.6")	12.440 (489.8")	9.730 (383.1")	9.720 (382.7")	9.630 (379.1")
	B) Overall height (to top of boom)	3.330 (131.1")	3.120 (122.8")	3.090 (121.65")	3.090 (121.7")	3.120 (122.8")	3.120 (122.8")	3.090 (121.7")
	C) Overall Width	2.990 (117.7")	2.990 (117.7")	2.990 (117.7")	3.090 (121.7")	2.540 (100.0")	2.540 (100.0")	2.540 (100.0")
	D) Distance between tumblers	3.640 (143.3")	3.640 (143.3")	3.640 (143.3")	3.640 (143.3")	3.640 (143.3")	3.640 (143.3")	3.640 (143.3")
	E) Distance from center of swing to rear end	2.810 (110.6")	2.810 (110.6")	2.810 (110.6")	2.810 (110.6")	2.855 (112.4")	2.855 (112.4")	2.855 (112.4")
	E') Tail swing radius	2.830 (111.4")	2.830 (111.4")	2.830 (111.4")	2.830 (111.4")	2.875 (113.2")	2.875 (113.2")	2.875 (113.2")
	F) Counterweight Clearance	1.065 (41.9")	1.065 (41.9")	1.065 (41.9")	1.065 (41.9")	1.065 (41.9")	1.065 (41.9")	1.065 (41.9")
	G) Track Height	935 (36.8")	935 (36.8")	935 (36.8")	935 (36.8")	935 (36.8")	935 (36.8")	935 (36.8")
	H) Ground Clearance	465 (18.3")	465 (18.3")	465 (18.3")	465 (18.3")	465 (18.3")	465 (18.3")	465 (18.3")
	I) Track Gauge	2.390 (94.1")	2.390 (94.1")	2.390 (94.1")	2.390 (94.1")	2.040 (80.3")	2.040 (80.3")	2.040 (80.3")
	J) Shoe Width	600 (24")	600 (24")	600 (24")	700 (28")	500 (20")	500 (20")	500 (20")
	K) Track Length	4.460 (175.6")	4.460 (175.6")	4.460 (175.6")	4.460 (175.6")	4.460 (175.6")	4.460 (175.6")	4.460 (175.6")
	L) Length on ground (transport)	5.320 (209.4")	5.920 (233.1")	5.340 (210.2")	4.780 (188.2")	5.920 (233.1")	5.320 (209.4")	5.340 (210.2")
	M) Overall height of cab	3.010 (118.5")	3.010 (118.5")	3.010 (118.5")	3.010 (118.5")	3.010 (118.5")	3.010 (118.5")	3.010 (118.5")
	N) Overall width of upperstructure	2.740 (107.9")	2.740 (107.9")	2.740 (107.9")	2.740 (107.9")	2.500 (98.4")	2.500 (98.4")	2.500 (98.4")
WORKING RANGES (mm - inches")	S) Maximum Digging Reach	9.980 (392.9")	9.560 (376.4")	9.920 (390.6")	15.070 (593.3")	9.560 (376.4")	9.570 (376.8")	9.920 (390.6")
	T) Maximum Digging Reach on Ground Level	9.810 (386.2")	9.390 (369.7")	9.750 (383.9")	14.960 (589.0")	9.390 (369.7")	9.810 (386.2")	9.750 (383.9")
	U) Maximum Digging Depth	6.730 (265.0")	6.210 (244.5")	6.400 (252.0")	11.450 (450.8")	6.210 (244.5")	6.730 (265.0")	6.400 (252.0")
	V) Maximum Digging Height	9.680 (381.1")	9.620 (378.7")	10.900 (429.1")	13.120 (516.5")	9.620 (378.7")	9.680 (381.1")	10.900 (429.1")
	W) Maximum Dumping Height	6.950 (273.6")	6.840 (269.3")	8.000 (315.0")	10.710 (421.7")	6.840 (269.3")	6.950 (273.6")	8.000 (315.0")
	W') Minimum Dumping Height	2.520 (99.2")	3.040 (119.7")	3.000 (118.1")	2.320 (91.3")	3.040 (119.7")	2.520 (99.2")	3.000 (118.1")
	X) Maximum Vertical Digging Depth	5.250 (206.7")	5.050 (198.8")	5.070 (199.6")	10.930 (430.3")	5.050 (198.8")	5.250 (206.7")	5.070 (199.6")
	Y) Minimum Swing Radius	3.520 (138.6")	3.550 (139.8")	2.440 (96.1")	4.290 (168.9")	3.550 (139.8")	3.520 (138.6")	2.440 (96.1")
	Z) Maximum Digging Depth (2440 mm (8') level)	6.540 (257.5")	6.010 (236.6")	6.300 (248.0")	11.320 (445.7")	6.010 (236.6")	6.540 (257.5")	6.300 (248.0")

\* Standard

## FORCES (kgf - lbf)

		LC				NLC		
		Mono Boom		Two Pieces Boom	LR	Mono Boom		Two Pieces Boom
BOOM (M - feet')		5,70 (18.70')		5,60 (18.37')	8,50 (27.89')	5,70 (18.70')		5,60 (18.37')
ARM (M - feet')		*2,92 (9.58')	2,40 (7.87')	2,92 (9.58')	6,10 (20')	2,40 (7.87')	2,92 (9.58')	2,92 (9.58')
SAE	Bucket Digging Force	13.300 (29,321 lbf)	13.300 (29,321 lbf)	13.300 (29,321 lbf)	5.700 (12,566 lbf)	13.300 (29,321 lbf)	13.300 (29,321 lbf)	13.300 (29,321 lbf)
	Bucket Digging Force (Power Boost)	14.000 (30,864 lbf)	14.000 (30,864 lbf)	14.000 (30,864 lbf)	-	14.000 (30,864 lbf)	14.000 (30,864 lbf)	14.000 (30,864 lbf)
	Arm Crowd Force	10.000 (22,046 lbf)	11.400 (25,132 lbf)	10.000 (22,046 lbf)	4.100 (9039 lbf)	11.400 (25,132 lbf)	10.000 (22,046 lbf)	10.000 (22,046 lbf)
	Arm Crowd Force (Power Boost)	10.600 (23,369 lbf)	12.100 (26,676 lbf)	10.600 (23,369 lbf)	-	12.100 (26,676 lbf)	10.600 (23,369 lbf)	10.600 (23,369 lbf)
ISO	Bucket Digging Force	14.900 (32,849 lbf)	14.900 (32,848 lbf)	14.900 (32,849 lbf)	6.600 (14,550 lbf)	14.900 (32,849 lbf)	14.900 (32,849 lbf)	14.900 (32,849 lbf)
	Bucket Digging Force (Power Boost)	15.800 (34,833 lbf)	15.800 (34,833 lbf)	15.800 (34,833 lbf)	-	15.800 (34,833 lbf)	15.800 (34,833 lbf)	15.800 (34,833 lbf)
	Arm Crowd Force	10.400 (22,928 lbf)	11.800 (26,014 lbf)	10.400 (22,928 lbf)	4.200 (9259 lbf)	11.800 (26,014 lbf)	10.400 (22,928 lbf)	10.400 (22,928 lbf)
	Arm Crowd Force (Power Boost)	10.900 (24,030 lbf)	12.500 (27,557 lbf)	10.900 (24,030 lbf)	-	12.500 (27,558 lbf)	10.900 (24,030 lbf)	10.900 (24,030 lbf)


A- Material density less than 2.000 kg/m<sup>3</sup> (3370 lbs/yd<sup>3</sup>)

B- Material density less than 1.800 kg/m<sup>3</sup> (3034 lbs/yd<sup>3</sup>)

C- Material density less than 1.500 kg/m<sup>3</sup> (2530 lbs/yd<sup>3</sup>)







D- Material density less than 1.200 kg/m<sup>3</sup> (2022 lbs/yd<sup>3</sup>)

## HEAVY DUTY

STANDARD BUCKET			OPTIONAL BUCKET SELECTION SCHEME													
			General Purpose Bucket						Heavy Duty Type Bucket							
	Width	1.290 mm (50.8")	600 mm (23.6")	750 mm (29.5")	900 mm (35.4")	1050 mm (41.3")	1200 mm (47.2")	1400 mm (55.1")	600 mm (23.6")	750 mm (29.5")	900 mm (35.4")	1030 mm (40.6")	1110 mm (43.7")	1200 mm (47.2")	1370 mm (53.9")	1500 mm (59.1")
	Capacity (SAE)	*1,10 m <sup>3</sup> (1.44 yd <sup>3</sup> )	0,41 m <sup>3</sup> (0.54 yd <sup>3</sup> )	0,54 m <sup>3</sup> (0.71 yd <sup>3</sup> )	0,69 m <sup>3</sup> (0.90 yd <sup>3</sup> )	0,84 m <sup>3</sup> (1.10 yd <sup>3</sup> )	1,00 m <sup>3</sup> (1.31 yd <sup>3</sup> )	1,20 m <sup>3</sup> (1.57 yd <sup>3</sup> )	0,40 m <sup>3</sup> (0.52 yd <sup>3</sup> )	0,52 m <sup>3</sup> (0.68 yd <sup>3</sup> )	0,67 m <sup>3</sup> (0.88 yd <sup>3</sup> )	0,82 m <sup>3</sup> (1.07 yd <sup>3</sup> )	0,90 m <sup>3</sup> (1.18 yd <sup>3</sup> )	1,00 m <sup>3</sup> (1.31 yd <sup>3</sup> )	1,20 m <sup>3</sup> (1.57 yd <sup>3</sup> )	1,30 m <sup>3</sup> (1.70 yd <sup>3</sup> )
	Weight	860 kg (1895 lbs)	510 kg (1124 lbs)	580 kg (1278 lbs)	650 kg (1433 lbs)	700 kg (1543 lbs)	780 kg (1719 lbs)	950 kg (2094 lbs)	510 kg (1124 lbs)	600 kg (1322 lbs)	670 kg (1477 lbs)	720 kg (1587 lbs)	750 kg (1653 lbs)	820 kg (1807 lbs)	860 kg (1895 lbs)	930 kg (2050 lbs)
	Number of Teeth	5	3	3	4	4	5	5	3	3	4	4	4	5	5	6
ARM	*2,92 m (9.58')	B	A	A	A	A	A	C	A	A	A	A	A	A	C	C
	2,40 m (7.87')	A	A	A	A	A	A	B	A	A	A	A	A	A	B	C
	3,50 m (11.48')	C	A	A	A	A	B	D	A	A	A	A	A	B	D	D

\* Standard

## ATTACHMENTS

QUICK COUPLER	SIEVE BUCKET	ROCK TYPE BUCKET	POLYP	RIPPER	CLEANING BUCKET
					



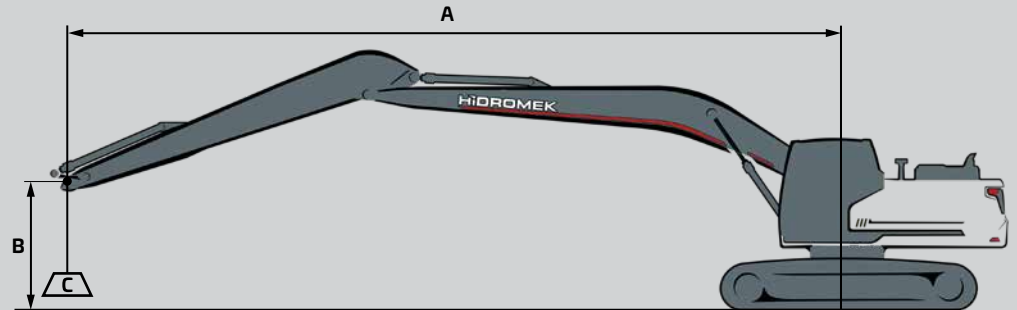
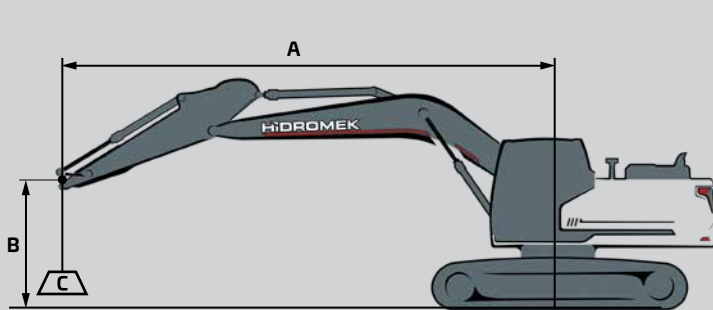
LIFTING CAPACITY - kg (lbs)											HMK 230 LC		
	Boom: 5,70 m (18,70')		Arm: 2,4 m (7,87')		Without bucket		STD, 600 mm (24") Crawler		CW: 4000 kg (8816 lbs)		📏 : Front 📏 : Side		
A, m (feet)	1,5 (4,92')		3,0 (9,84')		4,5 (14,76')		6,0 (19,68')		7,5 (24,61')		Maximum Reach		
B, m (feet)	📏	📏	📏	📏	📏	📏	📏	📏	📏	📏	📏	📏	R, m (feet)
7,5 (24,61')											*5900 (13,004 lbs)	*5900 (13,004 lbs)	5,67 (18,6')
6,0 (19,68')							*5600 (12,342 lbs)	*5600 (12,342 lbs)			*5450 (12,012 lbs)	4500 (9918 lbs)	6,89 (22,6')
4,5 (14,76')			*10150 (22,371 lbs)	*10150 (22,371 lbs)	*7200 (15,869 lbs)	*7200 (15,869 lbs)	*6050 (13,334 lbs)	5500 (12,122 lbs)	*5500 (12,122 lbs)	3850 (8485 lbs)	*5300 (11,681 lbs)	3750 (8265 lbs)	7,62 (25,0')
3,0 (9,84')					*8950 (19,726 lbs)	7900 (17,412 lbs)	*6800 (14,987 lbs)	5250 (11,571 lbs)	5750 (12,673 lbs)	3750 (8265 lbs)	5200 (11,461 lbs)	3400 (7494 lbs)	8,00 (26,2')
1,5 (4,92')					*10300 (22,701 lbs)	7400 (16,310 lbs)	*7500 (16,530 lbs)	4950 (10,910 lbs)	5650 (12,453 lbs)	3650 (8045 lbs)	5050 (11,130 lbs)	3250 (7163 lbs)	8,09 (26,5')
0 (Ground)					*10750 (23,693 lbs)	7150 (15,759 lbs)	7650 (16,861 lbs)	4800 (10,579 lbs)	5550 (12,232 lbs)	3550 (7824 lbs)	5200 (11,461 lbs)	3350 (7383 lbs)	7,88 (25,9')
-1,5 (-4,92')			*10650 (23,473 lbs)	*10650 (23,473 lbs)	*10400 (22,922 lbs)	7100 (15,648 lbs)	7600 (16,750 lbs)	4750 (10,469 lbs)			5700 (12,563 lbs)	3650 (8045 lbs)	7,37 (24,2')
-3,0 (-9,84')			*12350 (27,219 lbs)	*12350 (27,219 lbs)	*9200 (20,277 lbs)	7250 (15,979 lbs)	*6750 (14,877 lbs)	4850 (10,689 lbs)			*5950 (13,114 lbs)	4400 (9698 lbs)	6,46 (21,2')
-4,5 (-14,76')					*6350 (13,995 lbs)	*6350 (13,995 lbs)					*5450 (12,012 lbs)	*5450 (12,012 lbs)	4,95 (16,2')

LIFTING CAPACITY - kg (lbs)											HMK 230 LC		
	Boom: 5,7 m (18,70')		Arm: 2,92 m (9,58')		Without bucket		STD, 600 mm (24") Crawler		CW: 4000 kg (8816 lbs)		📏 : Front 📏 : Side		
A, m (feet)	1,5 (4,92')		3,0 (9,84')		4,5 (14,76')		6,0 (19,68')		7,5 (24,61')		Maximum Reach		
B, m (feet)	📏	📏	📏	📏	📏	📏	📏	📏	📏	📏	📏	📏	R, m (feet)
7,5 (24,61')							*5150 (11,351 lbs)	*5150 (11,351 lbs)			*4550 (10,028 lbs)	*4550 (10,028 lbs)	6,24 (20,5')
6,0 (19,68')							*5050 (11,130 lbs)	*5050 (11,130 lbs)			*4250 (9367 lbs)	4050 (8926 lbs)	7,37 (24,2')
4,5 (14,76')					*6450 (14,216 lbs)	*6450 (14,216 lbs)	*5550 (12,232 lbs)	5250 (11,571 lbs)	*5150 (11,351 lbs)	3900 (8596 lbs)	*4150 (9147 lbs)	3450 (7604 lbs)	8,05 (26,4')
3,0 (9,84')					*8200 (18,073 lbs)	8050 (17,742 lbs)	*6350 (13,995 lbs)	5250 (11,571 lbs)	*5450 (12,012 lbs)	3750 (8265 lbs)	*4250 (9367 lbs)	3100 (6832 lbs)	8,42 (27,6')
1,5 (4,92')					*9800 (21,599 lbs)	7450 (16,420 lbs)	*7150 (15,759 lbs)	4950 (10,910 lbs)	5600 (12,342 lbs)	3550 (7824 lbs)	*4550 (10,028 lbs)	3000 (6612 lbs)	8,50 (27,9')
0 (Ground)			*5950 (13,114 lbs)	*5950 (13,114 lbs)	*10550 (23,252 lbs)	7100 (15,648 lbs)	7650 (16,861 lbs)	4750 (10,469 lbs)	5500 (12,122 lbs)	3600 (7934 lbs)	4750 (10,469 lbs)	3050 (6722 lbs)	8,30 (27,2')
-1,5 (-4,92')	*6750 (14,877 lbs)	*6750 (14,877 lbs)	*10900 (24,024 lbs)	*10900 (24,024 lbs)	*10500 (23,142 lbs)	7000 (15,428 lbs)	7500 (16,530 lbs)	4650 (10,249 lbs)	5450 (12,012 lbs)	3450 (7604 lbs)	5150 (11,351 lbs)	3300 (7273 lbs)	7,82 (25,7')
-3,0 (-9,84')	*11850 (26,117 lbs)	*11850 (26,117 lbs)	*13500 (29,754 lbs)	*13500 (29,754 lbs)	*9650 (21,269 lbs)	7050 (15,538 lbs)	*7150 (15,759 lbs)	4700 (10,359 lbs)			*5750 (12,673 lbs)	3850 (8485 lbs)	6,97 (22,9')
-4,5 (-14,76')			*10400 (22,922 lbs)	*10400 (22,922 lbs)	*7550 (16,640 lbs)	7300 (16,089 lbs)					*5650 (12,453 lbs)	5400 (11,902 lbs)	5,61 (18,4')

LIFTING CAPACITY - kg (lbs)											HMK 230 LC LR		
	Boom: 8,5 m (27,89')		Arm: 6,1 m (20,01')		Without bucket		STD, 700 mm (28") Crawler		CW: 5500 kg (12,122 lbs)		📏 : Front 📏 : Side		
A, m (feet)	3,0 (9,84')		6,0 (19,68')		9,0 (29,53')		12,0 (39,37')		15,0 (49,21')		Maximum Reach		
B, m (feet)	📏	📏	📏	📏	📏	📏	📏	📏	📏	📏	📏	📏	R, m (feet)
12,0 (39,37')											*1450 (3196 lbs)	*1450 (3196 lbs)	9,17 (30,1')
9,0 (29,53')											*1250 (2755 lbs)	*1250 (2755 lbs)	11,71 (38,4')
6,0 (19,68')					*2650 (5841 lbs)	*2650 (5841 lbs)	*2400 (5290 lbs)	2250 (4959 lbs)			*1250 (2755 lbs)	*1250 (2755 lbs)	13,11 (43,0')
3,0 (9,84')	*9100 (20,056 lbs)	*9100 (20,056 lbs)	*4650 (10,249 lbs)	*4650 (10,249 lbs)	*3250 (7163 lbs)	*3250 (7163 lbs)	*2650 (5841 lbs)	2050 (4518 lbs)			*1350 (2975 lbs)	*1350 (2975 lbs)	13,72 (45,0')
0 (Ground)	*3400 (7494 lbs)	*3400 (7494 lbs)	*6200 (13,665 lbs)	5050 (11,130 lbs)	*3900 (8596 lbs)	2950 (6502 lbs)	*2950 (6502 lbs)	1900 (4188 lbs)			*1600 (3526 lbs)	1500 (3306 lbs)	13,66 (44,8')
-3,0 (-9,84')	*5450 (12,012 lbs)	*5450 (12,012 lbs)	*6750 (14,877 lbs)	4650 (10,249 lbs)	*4250 (9367 lbs)	2700 (5951 lbs)	2900 (6392 lbs)	1800 (3967 lbs)			*2050 (4518 lbs)	1600 (3526 lbs)	12,90 (42,3')
-6,0 (-19,68')	*8150 (17,963 lbs)	*8150 (17,963 lbs)	*6300 (13,885 lbs)	4650 (10,249 lbs)	*4050 (8926 lbs)	2650 (5841 lbs)					*3000 (6612 lbs)	1950 (4298 lbs)	11,31 (37,1')
-9,0 (-29,53')	*7900 (17,412 lbs)	*7900 (17,412 lbs)	*4650 (10,249 lbs)	*4650 (10,249 lbs)							*3100 (6832 lbs)	*3100 (6832 lbs)	8,43 (27,7')

LIFTING CAPACITY - kg (lbs)											HMK 230 NLC		
	Boom: 5,7 m (18.70')		Arm: 2,4 m (7.87')		Without bucket		STD, 500 mm (20") Crawler		CW: 4700 kg (10,358 lbs)		📏 : Front	📏 : Side	
A, m (feet)	1,5 (4.92')		3,0 (9.84')		4,5 (14.76')		6,0 (19.68')		7,5 (24.61')		Maximum Reach		
B, m (feet)	📏	📏	📏	📏	📏	📏	📏	📏	📏	📏	📏	📏	R, m (feet)
7,5 (24.61')											*5900 (13,004 lbs)	5600 (12,342 lbs)	5,67 (18.6')
6,0 (19.68')							*5600 (12,342 lbs)	5100 (11,240 lbs)			*5450 (12,012 lbs)	4050 (8926 lbs)	6,89 (22.6')
4,5 (14.76')			*10150 (22,371 lbs)	*10150 (22,371 lbs)	*7200 (15,869 lbs)	*7200 (15,869 lbs)	*6050 (13,334 lbs)	4950 (10,910 lbs)	*5550 (12,232 lbs)	3450 (7604 lbs)	*5300 (11,681 lbs)	3350 (7383 lbs)	7,62 (25.0')
3,0 (9.84')					*8950 (19,726 lbs)	6950 (15,318 lbs)	*6800 (14,987 lbs)	4650 (10,249 lbs)	*5800 (12,783 lbs)	3350 (7383 lbs)	*5350 (11,791 lbs)	3050 (6722 lbs)	8,00 (26.2')
1,5 (4.92')					*10300 (22,701 lbs)	6450 (14,216 lbs)	*7500 (16,530 lbs)	4400 (9698 lbs)	5850 (12,893 lbs)	3250 (7163 lbs)	5250 (11,571 lbs)	2900 (6392 lbs)	8,09 (26.5')
0 (Ground)					*10750 (23,693 lbs)	6200 (13,665 lbs)	*7850 (17,301 lbs)	4250 (9367 lbs)	5800 (12,783 lbs)	3150 (6943 lbs)	5400 (11,902 lbs)	2950 (6502 lbs)	7,88 (25.9')
-1,5 (-4.92')			*10650 (23,473 lbs)	*10650 (23,473 lbs)	*10400 (22,922 lbs)	6200 (13,665 lbs)	*7750 (17,081 lbs)	4200 (9257 lbs)			5950 (13,114 lbs)	3250 (7163 lbs)	7,37 (24.2')
-3,0 (-9.84')			*12350 (27,219 lbs)	11850 (26,117 lbs)	*9200 (20,277 lbs)	6300 (13,885 lbs)	*6750 (14,877 lbs)	4300 (9477 lbs)			*5950 (13,114 lbs)	3950 (8706 lbs)	6,46 (21.2')
-4,5 (-14.76')					*6350 (13,995 lbs)	*6350 (13,995 lbs)					*5450 (12,012 lbs)	*5450 (12,012 lbs)	4,95 (16.2')

LIFTING CAPACITY - kg (lbs)											HMK 230 NLC - 2P BOOM		
	Boom: 5,6 m (18.37')		Arm: 2,92 m (9.58')		Without bucket		STD, 500 mm (20") Crawler		CW: 4700 kg (10,359 lbs)		📏 : Front	📏 : Side	
A, m (feet)	1,5 (4.92')		3,0 (9.84')		4,5 (14.76')		6,0 (19.68')		7,5 (24.61')		Maximum Reach		
B, m (feet)	📏	📏	📏	📏	📏	📏	📏	📏	📏	📏	📏	📏	R, m (feet)
9,0 (29.53')											*5750 (12,673 lbs)	*5750 (12,673 lbs)	4,24 (13.9')
7,5 (24.61')					*7050 (15,538 lbs)	*7050 (15,538 lbs)	*5350 (11,791 lbs)	5150 (11,351 lbs)			*4650 (10,249 lbs)	*4650 (10,249 lbs)	6,17 (20.2')
6,0 (19.68')					*7150 (15,759 lbs)	*7150 (15,759 lbs)	*6550 (14,436 lbs)	5150 (11,351 lbs)			*4250 (9367 lbs)	3650 (8045 lbs)	7,30 (23.9')
4,5 (14.76')			*9600 (21,158 lbs)	*9600 (21,158 lbs)	*8450 (18,624 lbs)	7800 (17,191 lbs)	*6850 (15,097 lbs)	4950 (10,910 lbs)	*5900 (13,004 lbs)	3450 (7604 lbs)	*4150 (9147 lbs)	3050 (6722 lbs)	7,99 (26.2')
3,0 (9.84')					*9750 (21,489 lbs)	7100 (15,648 lbs)	*7400 (16,310 lbs)	4650 (10,249 lbs)	6000 (13,224 lbs)	3300 (7273 lbs)	*4250 (9367 lbs)	2750 (6061 lbs)	8,36 (27.4')
1,5 (4.92')					*10600 (23,362 lbs)	6450 (14,216 lbs)	*7750 (17,081 lbs)	4350 (9587 lbs)	5850 (12,893 lbs)	3150 (6943 lbs)	*4500 (9918 lbs)	2650 (5841 lbs)	8,44 (27.7')
0 (Ground)			*6100 (13,444 lbs)	*6100 (13,444 lbs)	*10400 (22,922 lbs)	6100 (13,444 lbs)	*7700 (16,971 lbs)	4150 (9147 lbs)	5750 (12,673 lbs)	3050 (6722 lbs)	*4950 (10,910 lbs)	2700 (5951 lbs)	8,25 (27.1')
-1,5 (-4.92')			*11100 (24,464 lbs)	*11100 (24,464 lbs)	*9300 (20,497 lbs)	6000 (13,224 lbs)	*7000 (15,428 lbs)	4050 (8926 lbs)	*5100 (11,240 lbs)	3050 (6722 lbs)	*4650 (10,249 lbs)	2900 (6392 lbs)	7,76 (25.5')
-3,0 (-9.84')			*8700 (19,175 lbs)	*8700 (19,175 lbs)	*7200 (15,869 lbs)	6100 (13,444 lbs)	*5350 (11,791 lbs)	4100 (9036 lbs)			*3950 (8706 lbs)	3450 (7604 lbs)	6,91 (22.7')



- A Load Radius  
B Load Point Height  
C Lifting Capacity

1. The above loads are in compliance with SAE J1097 and ISO 10567 Hydraulic Excavator Lifting Capacity Standards
2. The load point is the center-line of the bucket pivot mounting pin on the arm
3. Lifting capacity cannot exceed 75% of tipping capacity or 87% of hydraulic capacity.
4. (\*) indicates load limited by hydraulic capacity.



# HIDROMEK®

## HEAD OFFICE

**Address :** Ahi Evran OSB Mahallesi,  
Osmanlı Caddesi, No:1, 06935  
Sincan-ANKARA/TÜRKİYE

**Phone :** +90 312 267 12 60

**Fax :** +90 312 267 12 39

**E-mail:** export@hidromek.com.tr

## AFTER SALES SERVICE

**Address :** İstanbul Yolu 17. Km,  
Şehit Osman Avcı Mahallesi,  
No: 479, Etimesgut-ANKARA/TÜRKİYE

**Phone :** +90 312 280 87 40

**Fax :** +90 312 280 87 48

## HIDROMEK® WEST

### HIDROMEK MAQUINARIA DE CONSTRUCCION ESPAÑA S.L.

**Address :** Avenida del Progrés, 7, 08840 –  
Viladecans Barcelona/ SPAIN

**Phone :** +34 93 638 84 65

**E-mail :** info@hidromek.es

## HIDROMEK® JAPAN

**Address :** 5-10, Hashimoto 6-chome,  
Midori-Ku, Sagamihara,  
Kanagawa, 252-0143 JAPAN

**Phone :** +81 42 703 0261

**Fax :** +81 42 703 0262

**E-mail :** Kiyoko.Shinoda@hidromek.com

## HIDROMEK® RUS

**Address :** Bld. 72, Zhivopisnaya str., khutor  
Oktyabrskiy, Krasnodar,  
350032, RUSSIA

**Phone :** +7 861 290 3007

**E-mail :** hidromekrus@hidromek.ru

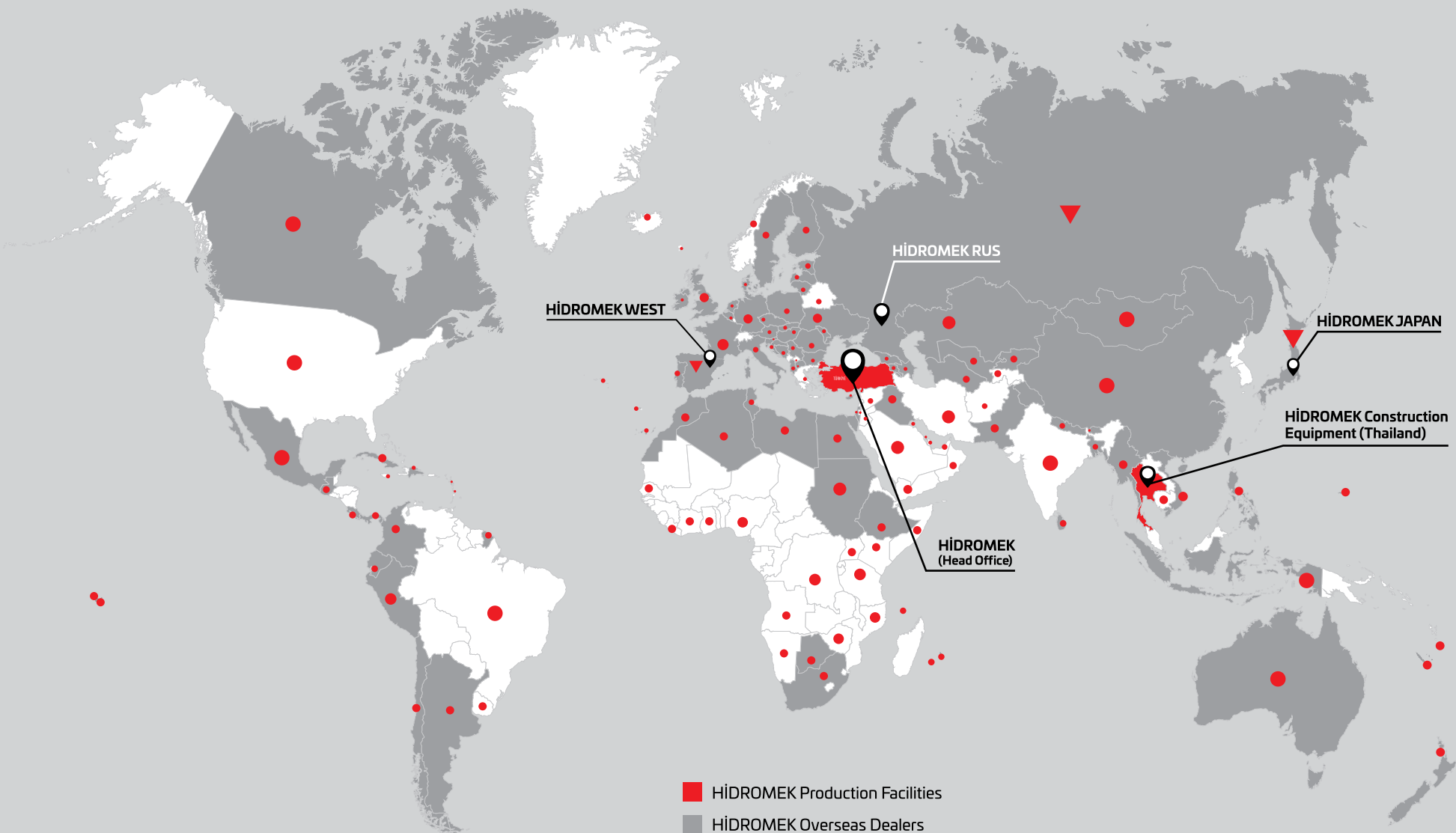
## HIDROMEK® HCE

### HIDROMEK Construction Equipment (Thailand) Ltd.

**Address :** Amata City Chonburi Industrial Estate Phase 7,  
No. 700/669 Moo 1, T.Phanthong,  
A.Phanthong, Chonburi 20160, TAYLAND

**Phone :** +66 38 447 349

**Fax :** +66 38 447 355



HíDROMEK WEST

HíDROMEK RUS

HíDROMEK JAPAN

HíDROMEK Construction Equipment (Thailand)

HíDROMEK (Head Office)

- HíDROMEK Production Facilities
- HíDROMEK Overseas Dealers
- ▼ HíDROMEK Overseas Sales and Aftersales Services Points
- Countries HíDROMEK Machines Running



# HIDROMEK®

Together Stronger

[www.hidromek.com](http://www.hidromek.com)

[f hidromek.tr](https://www.facebook.com/hidromek.tr) [X Hidromek](https://x.com/Hidromek) [ig hidromekofficial](https://www.instagram.com/hidromekofficial) [yt HidromekTv](https://www.youtube.com/HidromekTv) [in company/hidromek](https://www.linkedin.com/company/hidromek)